

Playback Menu		Nikon D70 – Grads
1. Delete		NA
2. Folder Designate		Folder Select/All
3. Rotate Tall		Off
4. Slide Show		NA
5. Hide Image		NA
6. Print Set		NA
Shooting Menu		
1. Optimize image		N-Normal
2. Long exp. NR		ON
3. Image Quality		Basic
4. Image Size		Medium
5. White bal.		Flash
6. ISO		200 or 400 (see chart)
CSM-Custom Menu		
R.. Menu Reset		- - NA
01. Beep	S	ON
02. Autofocus	s	AF-S
03. AF-area mode	S	Dynamic Area
04. AF assist	S	Off
05. ISO auto	S	Off
06. No CF Card?	S	Lock
07. Image review	S	ON
08. Grid Display	S	OFF
09. EV step	S	1/3 Steps
10. Exp. Comp		OFF
11. Center wtd		(.) 12
12. BKT set		NA
13. BKT Order		NA
14. Command dial		OFF
15. AE-L/AF-L		AE/AF Lock
16. AE Lock		OFF
17. Focus Area		OFF
18. AF area illm		A
19. Flash mode		1/16 (For Internal Strobe)
20. Flash sign		OFF
21. Shutter Spd		1/60 (For Dedicated Flash)
22. Monitor off		10s
23. Meter-off		6s
24. Self-timer		NA -10s
25. Remote		NA – 1m
Setup Menu		
1. Folders		D70 or Current
2. File No. Seq.		OFF
3. Format		Only if card backed up
4. CSM menu		Simple
5. Date		Current
6. LCD brightness		0
7. Mirror lock-up		- - For Cleaning
8. Video mode		NTSC
9. Language		En
10. Image comment		ON (Name Your Camera)
11. USB		P
12. Dust ref photo		NA
13. Firmware Ver.		Current
14. Image rotation		Off

Graduations

Nikon D70 Version 2005A

With SunPak 544 and QP2 Grad Market

Camera Settings	Indoor/ Night	Cloudy	Backlit Sun	Full Sun
Focal Length	For normal shots, set lens to 35mm (=52.5mm)			
Focus	Manual@8' for Handshakes & 5' or 7' for Flags			
Shooting Exposure Mode	M	M	M	M
Shutter Speed	60	125	250	250
Aperture	f8	f11	f11	f16
ASA/ISO	400	200	200	200
White Balance	Flash	Flash	Flash	Flash
Resolution Image Size	M	M	M	M
Compression Quality	Basic	Basic	Basic	Basic
Meter	Matrix	Matrix	Matrix	Matrix
Exp. Comp	0	0	0	0
Flash Comp	0	0	0	0
Handshake Strobe Settings	Indoors or Night	Cloudy	Backlit Sun	Full Sun
Power Mode	Manual	Manual	Manual	Manual
Power Setting	1/16	1/4	1/4	1/4
Flag Shot Strobe Settings	Indoors or Night			
Power Mode	Auto	Auto	Auto	Auto
Power Setting	f8	f11	f11	f16
ASA/ISO	400	200	200	200

Strobe Power may need to be adjusted based on strobe calibration.

Check Your Settings	1 Shot	5 Shots	30 Shots
Color Codes Indicate Frequency			

Nikon D70 Grad Cropping

Quicpics 2 Grad Market cropping differs from the traditional Quicpics cropping/printing which are normally cropped equally from the top and bottom. Vertical images printed through Quicpics 2 Grads will be top cropped for all print sizes. The top of the viewfinder will be the top of the vertical print regardless of print size. Place the top of the viewfinder 5" over the top of the tallest subject's head or mortar board for vertical shots. All horizontal images should still be centered in the viewfinder and will be cropped equally from the left and right.



Full Frame & Borderless 4x6



Borderless 5x7



Borderless 8x10

Handshake Shots

@ 8 Feet

White Line indicates 8x10 crop. Leave 5" of space over tallest person's mortar board.

Flow of Graduates



Handshake-8'

Taped X for Graduate

Front of Stage & Audience

8'

Taped line for Photographer 8' from graduate's mark at approximately 30° off of flow of traffic.

Equipment Checklist

- ☐ Nikon D70
- ☐ Hot Shoe Adapter
- ☐ 2 Camera Batteries
- ☐ Camera Lens with Hood
- ☐ Cam. Battery Charger
- ☐ Strobe with battery adapter
- ☐ Backup PC Cord
- ☐ Wide Angle Diffuser for wide lenses
- ☐ 2 Sets - Strobe Batteries
- ☐ Strobe Battery Charger
- ☐ Flash Memory
- ☐ Password Cards
- ☐ Event Agreement
- ☐ Assignment Sheet w/ diagram
- ☐ Ceremony Map
- ☐ Film Envelope
- ☐ Flags/Banners and stands and clips
- ☐ Masking Tape & Marker
- ☐ Tape Measure or Cord
- ☐ Two Tape Recorders w/ fresh batteries
- ☐ 2 Cassette Tapes
- ☐ Microphone with Extension
- ☐ Reader Cards/Pencils/Rubber Bands
- ☐ Fish Stringer

Arrival Checklist

- Arrive 2 Hrs Prior to Ceremony
- Locate Contact Person
- Meet Presenter
- Tape Presenter's Marks
- Tape Graduate's Marks
- Tape Photographer's Marks - 8 ft from graduate's mark
- Setup Flags
 - US on Photog's Left-State on Right
 - Pen flags in center & let drape
- Tape Flag Shot Marks
 - Grad. 1 ft from flags/photog
 - 5 ft from graduate.
- Hand out Reader Cards
- Get Address List (If Available)
- Any special presentations?
- Setup equipment
- Equipment Checks Performed
- Confirm Equipment Settings
-
- Setup Tape Recorder w/ Mike
- Setup Backup Recorder
- Indicate ceremony, order #, staff, etc. on beginning of tapes & confirm recorder's operation.
- Diagram Flow of Ceremony

Shooting Checklist

Use Handshake settings for PR's

- 3 Shots of stage setup
- School setting up stage
- Ushers handing out program
- Families arriving
- Band Performers Practicing
- Grads/Faculty getting ready
- Presentation of Colors
- Procession grads/faculty
- 2 shots of platform guests
- 2 shots(2 angles) ea. Speaker
- Special Presentations
- Flowers, Seals, Banners, etc.
- Horiz. down row with grads clapping.
- Indoor Overview of graduates-4 shots
 - 1/30 & 1/60 Shutter Speed
 - f4 & f2.8 Aperture
 - Flash-Full Manual w/ diffuser if using 28mm

Diploma Presentations

- Presentation of Diplomas - ea grad
- Flag Shots of each graduate.
- Confirm that strobe is firing

Post Ceremony

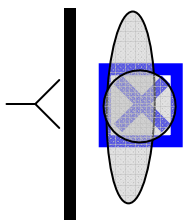
- Pickup reader cards
- Pickup marching list
- Label cards & list w/ School
- Pickup address labels or address list
- Confirm Sequence of flash cards for all lines and flag shots.
- Put flash cards in card Envelopes
- Complete Grad Reports
- Finish Ceremony Diagram
- Complete Payroll Forms
- Label tapes w/ school
- Thank School Contact
- Put lists, tapes, forms, etc. into env.
- Return env. & equipment to office

Shooting Tips

1. Test settings prior to shoot.
2. Check menu settings prior to shoot.
 - a. Playback
 - b. Custom (CSM)
 - c. Shooting
 - d. Setup
- ☑ Check **PRIMARY** settings every shot.
 - a. Focal Length
 - b. Cropping
 - c. Focus
 - d. Flash Ready
- ☑ Check **SECONDARY** settings every 5 shots.
 - a. Shooting Mode
 - b. Shutter Speed
 - c. Aperture
 - c. Flash Power
- ☑ Check **TERTIARY** settings every 30 shots.
 - a. ASA
 - b. White Balance
 - c. Resolution
 - d. Compression
 - e. Lens Clean
6. Always have strobe on top when shooting vertical shots.
7. Use LCD monitor only as a rough guide of proper exposure.
8. Use wider focal lengths for overviews
9. Use strobe diffuser if shooting wider than 24mm (= 36mm)
10. Confirm that strobe is firing.
11. Leave 5" over tallest person's head or mortar board for vertical shots.
12. Always crop looser when shooting Horizontal! 8x10 prints.
13. Carry a spare camera battery and strobe battery.

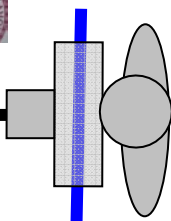
Flag Shots

@ 7 Feet with lens barrel on 50mm (75mm equivalent)



Taped X & Box for Graduate 1' from background

5' or 7'



Taped line for Photographer 7' from Graduate